

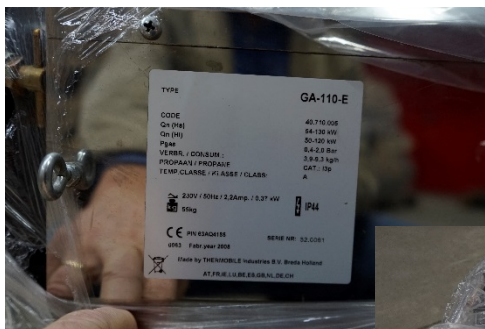
DESCRIPTION

GA-110E DIRECT PROPANE-GAS FIRED HEATER

Fabr.year: **2008**

- Unused
- Pcs available: 2
- Price: € 925.- net FCA

(B_40710005/02)



FEATURES

- All GA models can be connected to a modulating system.
- Supplied with burner relay, ionization flame protection, thermostat connection and hose breakage protection.
- Clean combustion air through fresh outside air supply.
- Service-friendly, humidity- and dust proof control panel.
- Adjustable capacity.
- KIWA certified

ADVANTAGES

- Can be installed both horizontally and vertically to supply warm air to the fans of drying installations.
- Suspension brackets and wheel sets available as an option. (wheel set standard on GA-110)
- Large capacity.

APPLICATIONS

- Heating of greenhouses and polytunnels (control of CO₂ en CO levels imperative).
- Heating of pig- and poultry houses.
- Drying of agricultural produce.

WORKING PRINCIPLE

A direct gas-fired heater.
This product requires ventilation of the area at all times.
Installation by qualified personnel only.

TECHNICAL SPECIFICATIONS

GA SERIES	24	42	60	85	110
Heat output min. (kW)	16	18	27	39	54
Heat output Max. (kW)	31	44	63	93	130
Fuel consumption gas Min. (kg/hr)	1,1	1,4	1,9	2,8	3,9
Fuel consumption gas Max. (kg/hr)	2,1	3,2	4,6	6,7	9,3
Heated airflow (m³/hr)	760	760	2400	2400	4000
Power consumption (A) 230V	0,60	0,60	0,64	0,64	2,20
Gas connection Ø (inch)	1/2	1/2	1/2	1/2	1/2
Gas pressure on heater (bar)	0,4-1,5	0,4-1,5	0,4-2,0	0,4-2,0	0,4-2,0
Thermostat connection	✓	✓	✓	✓	✓
Dimensions (L*W*H) cm	58*37*45	58*37*45	109*46*47	58*37*45	118*53*60
Weight (kg)	19kg	19kg	36kg	36kg	55kg